

SYSTEM 2000

per tubi in PE e PVC

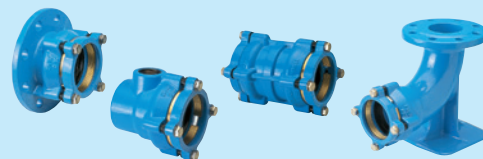


**Pagina
F 4**

Flangia/pezzi speciali System 2000

Manicotto-flangia System 2000
Raccordo System 2000
Raccordo Syno2000
Fondo flangiato System 2000
Tappo finale System 2000

Pagina F 4/1
Pagina F 4/2
Pagina E 3/2
Pagina F 4/2
Pagina F 4/2



**Pagina
F 5**

Pezzi speciali System 2000

Pezzo MMB System 2000
Pezzo MMA System 2000
Curva 90°, 45°, 30°, 11° System 2000

Pagina F 5/1
Pagina F 5/1
Pagina F 5/2



SYSTEM 2000

Flangia per tubi in PE e PVC



Caratteristica del progetto

- Raccordo con manicotti ad innesto antisfilamento per tubi in PE e PVC
- Flange dimensionate a norma EN 1092-2, forate a norma EN 1092-2 | PN 10 standard; EN 1092-2 | PN 16 da DN 200 a DN 600 indicare nell'ordine - altre norme su richiesta
- Con guarnizione controflangia integrata in elastomero

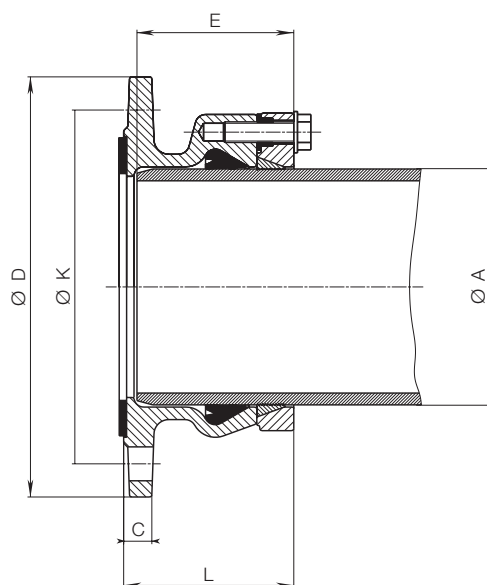
Nr. 0400



Codice	MOP (PN)	Dimensione/DN	Dimensione/DN													
			50	60	65	80	100	125	150	200	250	300	400	500	600	
0400	16 (DN 50 - DN 150) 10 (DN 200 - DN 600)	Ø tubo A	63	63	63	63	90	110	140	200	250	315	400	500	630	
			75	75	75	110	125	160	225	280	355	450	560			
						90	125	140	180	250						
									160							

*DN 200-600, PN 16 su richiesta

DN flangia	Ø tubo A	Ø D	Ø K	C	L	E	Viti		Peso
							Numero	Filettatura	
50	63	165	125	19	90	80	4	M 16	3,7
60	63	175	135	19	90	80	4	M 16	3,8
60	75	175	138	19	92	82	4	M 16	4,0
65	63	185	145	19	90	80	4	M 16	4,3
65	75	185	145	19	92	82	4	M 16	4,6
80	63	200	160	19	90	80	8	M 16	4,7
80	75	200	160	19	92	82	8	M 16	4,8
80	90	200	160	19	95	85	8	M 16	5,5
100	90	220	180	19	95	85	8	M 16	6,8
100	110	220	180	19	95	85	8	M 16	6,3
100	125	220	180	19	97	87	8	M 16	6,6
125	110	250	210	19	95	85	8	M 16	7,7
125	125	250	210	19	97	87	8	M 16	7,8
125	140	250	210	19	103	93	8	M 16	10,3
125	160	250	210	19	145	110	8	M 16	11,5
150	140	285	240	19	103	93	8	M 20	11,3
150	160	285	240	19	115	105	8	M 20	10,5
150	180	285	240	19	125	115	8	M 20	12,5
200	200	340	295	20	135	125	8	M 20	16,8
200	225	340	295	20	138	128	8	M 20	18,0
200	250	340	295	20	225	145	8	M 20	27,0
250	250	400	350	22	155	145	12	M 20	28,4
250	280	400	350	22	158	148	12	M 20	29,0
300	315	455	400	25	184	174	12	M 20	43,0
300	355	455	400	25	277	237	12	M 20	63,0
400	400	565	515	25	242	230	16	M 24	76,5
400	450	565	515	25	302	260	16	M 24	84,0
500	500	715	620	32	365	346	20	M 27	144,0
500	560	715	620	32	450	372	20	M 27	167,0
600	630	760	725	36	459	399	20	M 27	256,0

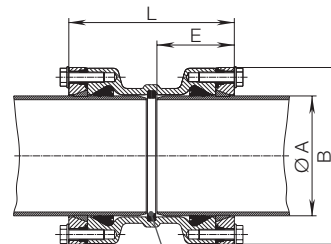


SYSTEM 2000

Pezzi speciali per tubi in PE e PVC

Ø tubo A	L	E	B	Peso
63	171	80	124	3,6
75	175	82	138	4,3
90	181	85	152	5,8
110	181	85	172	6,5
125	185	87	193	8,2
140	197	93	210	9,0
160	221	105	236	12,0
180	241	113	258	19,0
200	261	125	284	24,0
225	265	128	314	28,0
250	300	145	347	34,0
280	306	148	376	40,5
315	358	174	422	62,5
355	464	237	472	98,0

Raccordo Nr. 0430

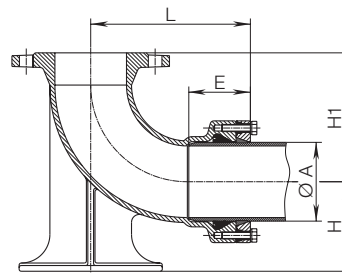


Attenzione! In caso di utilizzo come sovrasaracinesca: **rimuovere l'anello** di battuta e smussare profondamente il tubo (vedere istruzioni di montaggio)

Codice	MOP (PN)	Diametro Ø tubo A													
		63	75	90	110	125	140	160	180	200	225	250	280	315	355
0430	16														

DN	Ø tubo A	L	E	H	H1	Peso
80	90	210	85	110	165	12,7
100	110	223	85	125	180	16,0

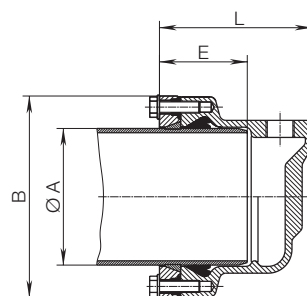
Curva flangiata con sostegno Nr. 5045



Codice	MOP (PN)	Diametro/DN Ø tubo A	
		80 90	100 110
5045	16		

Ø tubo A	L	E	B	Peso
63	106	80	124	2,7
75	138	82	138	3,2
90	141	85	152	4,6
110	159	85	172	6,4
125	162	87	193	6,1
140	169	93	210	7,7
160	180	105	236	8,6
180	192	113	258	11,7
200	203	125	284	14,5
225	207	128	314	16,5
250	225	145	347	20,5
280	228	148	376	25,0
315	254	174	422	33,5

Tappo finale Nr. 8075



A scelta con o senza uscita filettata assiale o radiale 1" - 2"

Codice	MOP (PN)	Diametro Ø tubo A												
		63	75	90	110	125	140	160	180	200	225	250	280	315
8075	16													

SYSTEM 2000

Pezzi speciali per tubi in PE e PVC

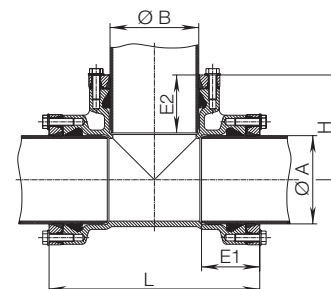


Ø tubo A	Ø B	L	E1	E2	H	Peso
63	63	236	83	83	118	6,0
75	75	250	85	85	125	7,7
90	90	268	85	85	134	9,0
110	63	240	85	80	140	7,7
	90	270	85	85	145	8,9
125	90	274	87	85	150	10,4
	110	294	97	85	150	10,7
140	125	306	90	90	153	15,0
	90	288	93	85	157,5	12,2
140	110	305	93	85	160	12,5
	140	344	96	96	167	19,0
160	90	310	105	85	170	14,0
	110	330	105	85	170	14,5
160	125	380			170	19,8
	160	380	105	105	190	16,5
180	125	360	113	87	180	24,0
	180	415	113	113	207,5	29,0
200	200	460	128	128	230	35,0
	90	356	128	85	200	29,5
225	110	376	128	128	200	30,0
	225	488	130	130	244	55,0

Pezzo MMB

Nr. 8515

uguale e ridotto



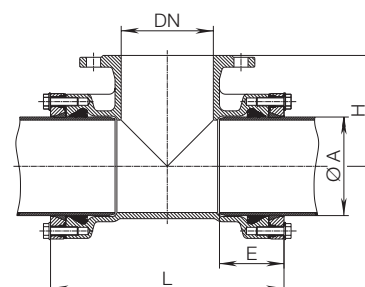
Codice	MOP (PN)	Diametro Ø tubo										
		Ø tubo A	63	75	90	110	125	140	160	180	200	225
8515	16	Ø tubo A	63	75	90	110	125	140	160	180	200	225
		Ø tubo B	63	75	90	63	90	90	90	125	200	90
							90	110	110	110	180	110

Ø tubo A	DN	L	E	H	Peso
63	50	236	83	100	8,0
75	65	250	85	110	9,0
90	80	268	85	140	11,0
110	50	240	85	150	10,0
	80	270	85	150	11,5
125	100	290	85	150	12,0
	80	274	87	160	14,0
125	100	294	87	160	14,0
	80	288	93	170	15,0
140	100	308	93	170	15,5
	125	334	93	170	16,0
160	80	300	105	180	16,5
	100	320	105	180	17,0
160	150	380	105	180	20,0
	80	310	113	200	23,0
180	150	415	113	200	31,0
	200	480	130	220	47,0
200	80	356	130	220	33,5
	100	376	130	220	33,0
225	200	488	130	230	55,0

Pezzo MMA

Nr. 8525

uguale e ridotto



Codice	MOP (PN)	DN	Ø tubo A									
			63	75	90	110	125	140	160	180	200	225
8525	16	DN	50	65	80	50	80	80	80	80	200	80
						80	100	100	100	150		100
							100	125	150	200		200

SYSTEM 2000

Pezzi speciali per tubi in PE e PVC



Ø tubo A	b				E	B	Peso			
	90°	45°	30°	11°			90°	45°	30°	11°
63	153	112			80	124	4,2	4,7		
75	170	120			82	138	5,5	5,0		
90	188	129	115	98	85	152	7,6	6,4	5,8	5,7
110	213	140	122	100	85	172	10,0	7,9	7,2	6,6
125	240	153			87	193	9,8	9,9		
140	246	159			93	210	15,0	13,1		
160	283	181	155		105	236	19,5	16,0	15,0	
180	293	191			113	258	26,0	21,0		
200	353	221			125	284	37,5	30,0		
225	355	224			128	314	43,0	38,0		
250	427	263			145	347	57,0	47,0		
280	430	266			148	376	69,0	55,0		
315	506	313			174	422	100,0	80,0		

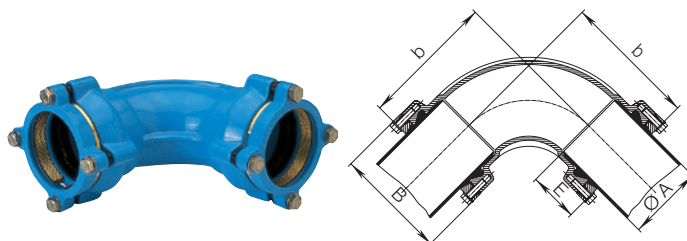
Curva

Nr. 8535 90°

Nr. 8545 45°

Nr. 8555 30°

Nr. 8557 11°



Codice	MOP (PN)	Diametro Ø tubo A												
		63	75	90	110	125	140	160	180	200	225	250	280	315
8535 90°	16													
8545 45°														
8555 30°														
8557 11°														